

ALPHA GOLD

C O R P O R A T I O N

A significant gold-silver-copper-zinc mineralized district

16th November 2011

Exchange/Symbol:	TSX Venture / ALQ
Shares Outstanding:	47.2 million
Shares Fully Diluted:	62.2 million
Recent Share Price:	\$0.03
Market Capitalization:	\$1.4 million
52-Week High/Low:	\$0.10 / \$0.025

The Company

Alpha Gold Corporation is a Canadian mineral exploration company focusing on exploring and developing its 100%-owned Lustdust Property situated with nearby road and rail access approximately 35 km east of Takla Lake in north-central British Columbia.

Since 1991, Alpha Gold has completed 300+ diamond drill holes and a NI 43-101 resource report in addition to litho logical and structural mapping, extensive soil geochemistry and reverse circulation drilling.

The Lustdust Property

The Lustdust Property consists of 20 contiguous mineral claims covering 9,583 hectares and hosts multiple gold-silver-copper-zinc zones and major additional discovery potential.

The Property has a long history of exploration and mining beginning in 1944 with the discovery of the Takla Silver Vein which was mined during the 1940s.

Twelve separate mineralized zones in six types of mineralization have been found:

- Gold-copper-silver Canyon Creek Skarn (CCS) and Skarn Extension
- Porphyry Molybdenum zone
- Number 3, 4B, East and GD zones of base and precious metal rich sulphide manto
- Bralorne Takla Mercury Mine
- Exploratory tunnels of the Takla Silver Mine (BCMINFILE 093N009), a developed prospect that contains high grade gold-silver veins
- Carlin-style mineralization in the Valley zone.

Using a geological model akin to that of Bingham Canyon, Utah, Sulfide Mineralization Model, suggests that the CCS may only be a short section, 500 metres, of what could be a connected mineralized system going for 6 km, through 7 zones trending SW to NNE.

The Canyon Creek Skarn Deposit (CCS)

Recent results from the NI 43-101 technical report complete on the CCS include:

- An Indicated Resource of 910,000 tonnes containing 49,094 ounces of gold at an average grade of 1.678 g/t Au, 31.1 million lbs of copper, 1.56% Cu and 1,149,807 ounces of silver, 39.3 g/t Ag;
- An Inferred Resource of 1,965,000 tonnes containing 108,410 ounces of gold, 1.716 g/t Au, 58.0 million lbs of copper, 1.34% Cu and 2,027,956 ounces of silver, 32.1 g/t;

The Skarn Extension at the north end of the CCS has yet to be defined and remains open along strike and down dip. The 2009 drilling campaign intercepted mineralization in 14 of the 17 holes drilled and it confirmed continuity along the Canyon Creek Skarn zone and further evidence of the mineralization extending north and south.



Inside the Core Shack at Lustdust



ALPHA GOLD

C O R P O R A T I O N

A significant gold-silver-copper-zinc mineralized district

16th November 2011

Exchange/Symbol: TSX Venture / ALQ
 Shares Outstanding: 47.2 million
 Shares Fully Diluted: 62.2 million
 Recent Share Price: \$0.03
 Market Capitalization: \$1.4 million
 52-Week High/Low: \$0.10 / \$0.025

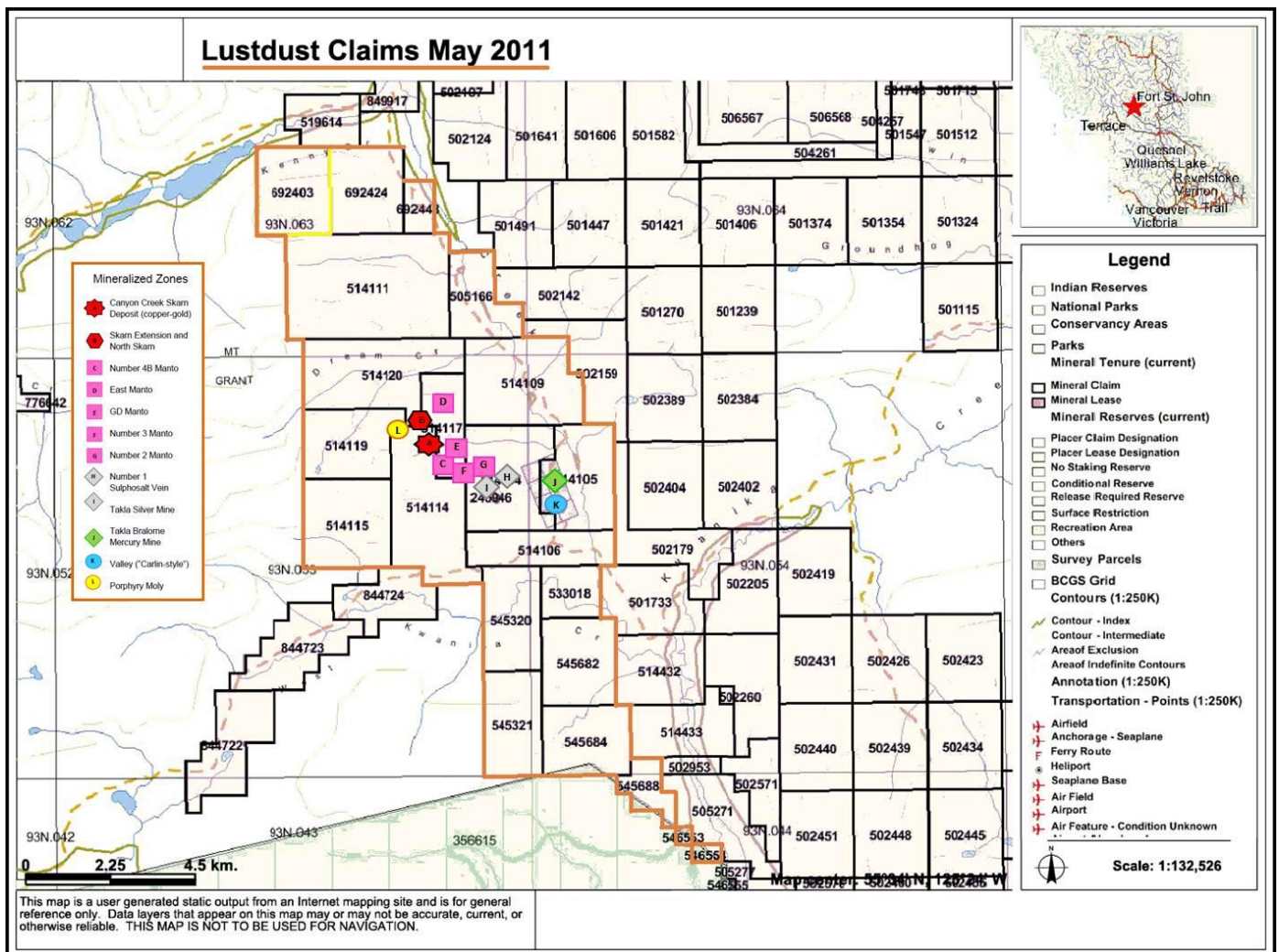
Management & Directors

Carl Pines, BSc, Interim CEO, Director: is an Associate Counsel with Owen Bird Law Corporation in Vancouver. He has served as legal counsel for a number of mining related transactions, and specializes in commercial law.

Mary P. Webster, Director: Ms. Webster has 30 years experience in the mining exploration, small cap and company start up industries, including eight years as a mining analyst. She was the Exploration Manager for Geddes Resources Ltd. and supervised the exploration programs of the Windy Craggy mining property in northwest British Columbia. She holds a B.Sc. Geology, from McMaster University and from Colorado School of Mines.

Joanne Ward, Director: An Alpha Gold consultant since 2001, Mrs. Ward joined the Company in 2009 to work closely with the CFO to assist on bookkeeping, accounting and interim reporting, and MD&A's. She also provides executive support in several areas.

Natalie Whatley, CFO: is an accountant who has produced all unaudited financial statements and MD&A's for Alpha for many years.



CHF Investor Relations:

T: 416-868-1079
 www.chfir.com

Cathy Hume,
 CEO
 Ext. 231
 E: cathy@chfir.com

Stephanie Fitzgerald,
 Associate Account Manager
 Ext. 222
 E: stephanie@chfir.com